

Speed Controller: Standard Type In-line Push Locking Type *Series AS*

Lock speed setting, with the touch of a button

It can be locked only by pushing the handle after adjustment.

Convenient opening indication scale

The opening indication scale for the needle valve is provided on the handle to facilitate speed adjustments.

Easy speed control at low flow volume ranges

Possible to control the mass velocity

Constant handle constructed of metal to withstand heavy usage

In addition to the standard handle made of resin, a heavy-duty metal handle is also available.

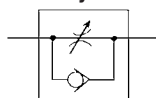
Retainer prevents an accidental loss of needle



Resin handle

Metal handle

JIS Symbol

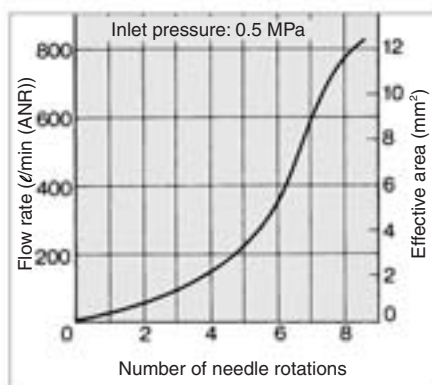


Model/Specifications

Model	Resin handle	AS3500-02	AS3500-03
	Metal handle	AS3500-02-2	AS3500-03-2
Port size		1/4	3/8
Applicable cylinder bore size (mm)		40, 50, 63	
Fluid		Air	
Proof pressure		1.5 MPa	
Max. operating pressure		1 MPa	
Min. operating pressure		0.05 MPa	
Ambient and fluid temperature		-5 to 60°C (No freezing)	
Number of needle rotation		8 turns	
Mass		130 g (Metallic handle: 140 g)	
Free flow	Flow rate (ℓ/min (ANR))	810	
	Effective area (mm ²)	12.3	
Controlled flow	Flow rate (ℓ/min (ANR))	810	
	Effective area (mm ²)	12.3	

Note) Flow rate values are measured at 0.5 MPa and 20°C.

Needle Valve/Flow Characteristics AS3500



How to Order

AS3500 - 02 -

Thread type

Nil	Rc
N	NPT
F	G

Material for handle

Nil	Resin
2	Metal

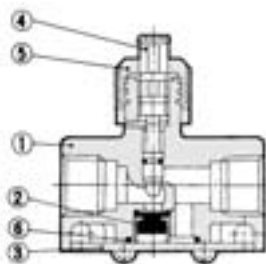
Port size

02	1/4
03	3/8

⚠ Caution

Be sure to read before handling.
Refer to front matters 58 and 59 for Safety Instructions and pages 412 to 414 for Flow Control Equipment Precautions.

Construction



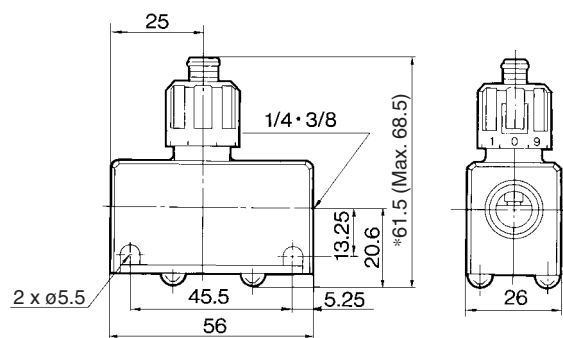
Component Parts

No.	Description	Material	Note
1	Body	Aluminum alloy	Chromate plated
2	Valve	NBR	
3	Cap	Rolled steel	Electroless nickel plated
4	Needle	Brass	
5	Handle	POM	Black
		Zinc alloy	Black

Replacement Parts

No.	Description	Material	Part no.
6	O-ring	NBR	14284

Dimensions



* Reference dimensions

AS

ASP

ASN

AQ

ASV

AK

VCHC

ASS

ASR

ASQ

KE

TMH