

Pressure Control Valve

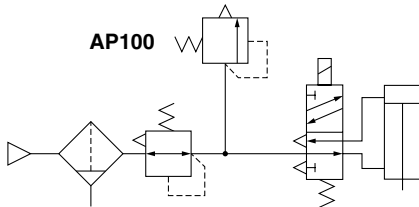
AP100

Pressure greater than the set pressure is released into the atmosphere, which allows pressure in the pipe to be maintained.



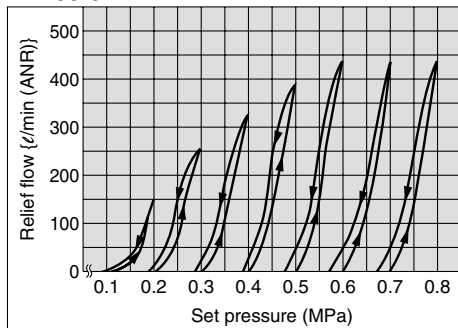
Application Example

Cylinder cushion



Relief Characteristics

AP100-02



Note) The graph above shows the relief flow when the set pressure rises and falls from 0.1 MPa.

Standard Specifications

| Model | AP100 |
|-------------------------------|--------------------------|
| Port size | 1/8, 1/4 |
| Fluid | Air |
| Proof pressure | 1.5 MPa |
| Max. operating pressure | 1.0 MPa |
| Set pressure range | 0.05 to 0.69 MPa |
| Ambient and fluid temperature | -5 to 60°C (No freezing) |
| Bracket | part no.: B21-1P |
| Mass (kg) | 0.12 |

How to Order

AP100 — **01** —

- Pressure control valve**
- Thread type**

| Symbol | Type |
|--------|------|
| Nil | Rc |
| N | NPT |
| F | G |
- Connection thread**

| Symbol | Size |
|--------|------|
| 01 | 1/8 |
| 02 | 1/4 |
- Special specifications**

| Symbol | Specifications |
|--------|------------------------------------|
| Nil | — |
| X201 | Set pressure range 0.02 to 0.2 MPa |
- Accessory**

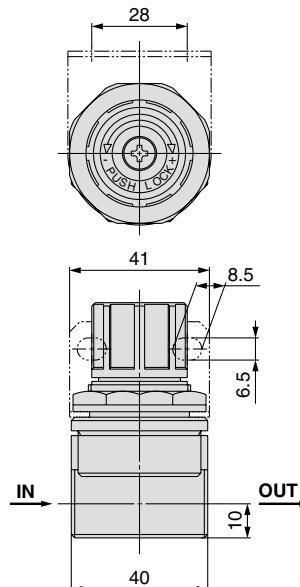
| Symbol | Description |
|--------|--------------|
| Nil | — |
| B | With bracket |

Precautions

Do not use this product as a safety valve.

[Definition of safety valves (JIS)
Valves used for ensuring pressure capacity and piping safety.]

Dimensions



Panel cut dimensions

